



## Cigar Humidors

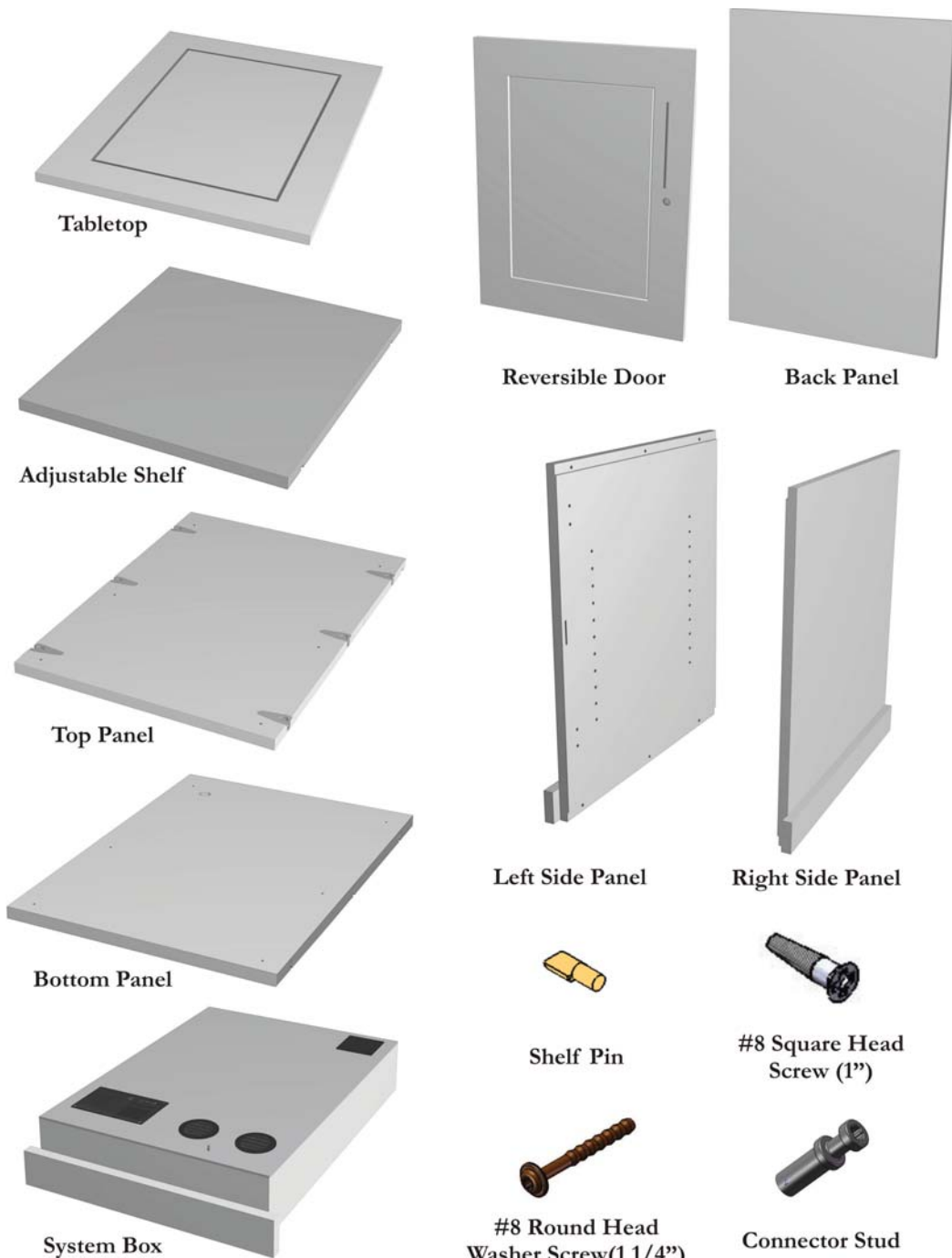
Sentry 1000KD



Congratulations! You have purchased a superior cigar humidor. These humidors have been specifically designed to properly store and display your cigars. Please call toll free 888.812.4427 if you have any questions or problems.

**Tools Required:**

- Philips Head Screw Driver
- Power Drill
- 1/8" Drill Bit

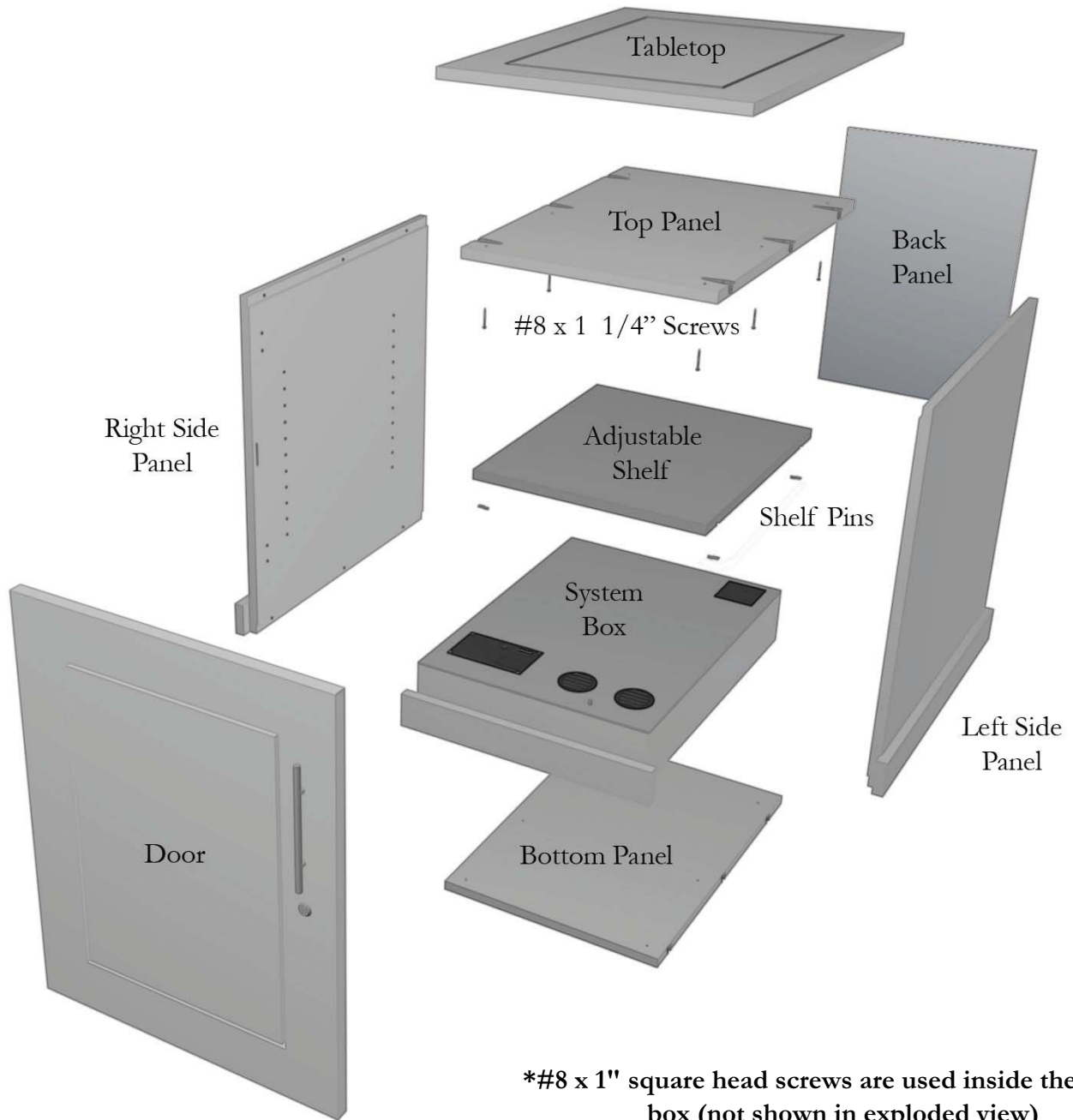


**Parts**

- (1) Top/Bottom Panels
- (1) Left Side Panel
- (1) Right Side Panel
- (1) Adjustable Shelf
- (4) Shelf Pins
- (1) Back Panel
- (1) Tabletop
- (1) System Box & System
- (6) #8 x 1 1/4" Round Head Washer Screws
- (2) #8 x 1" Square Head Screws
- (12) Connector Studs
- (1) Reversible Door
- (1) Bar Pull
- (2) Hinges & Plates

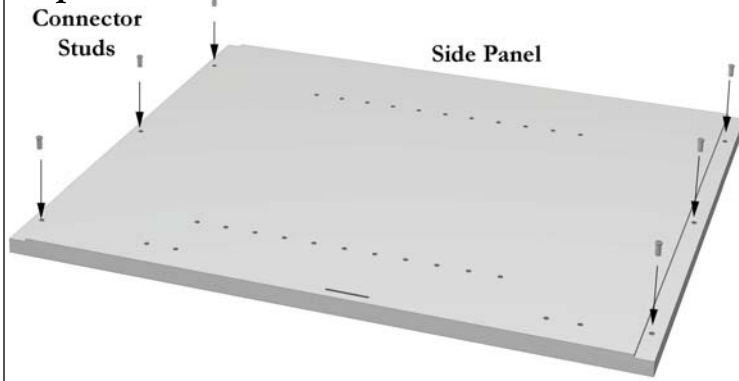
**Parts List**

# Exploded View



## Steps to Assembly

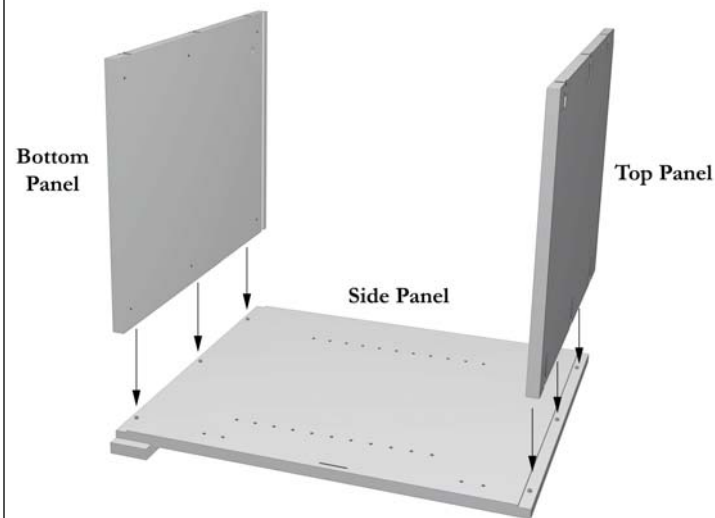
### Step 1



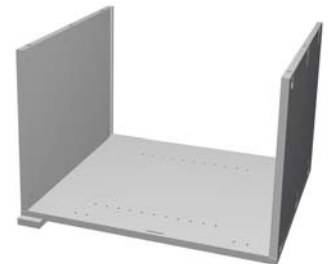
Locate the right side panel and lay it on a flat surface with the dados (or grooves) facing up. Insert (6) six connector studs into the provided holes in each dado (or groove).



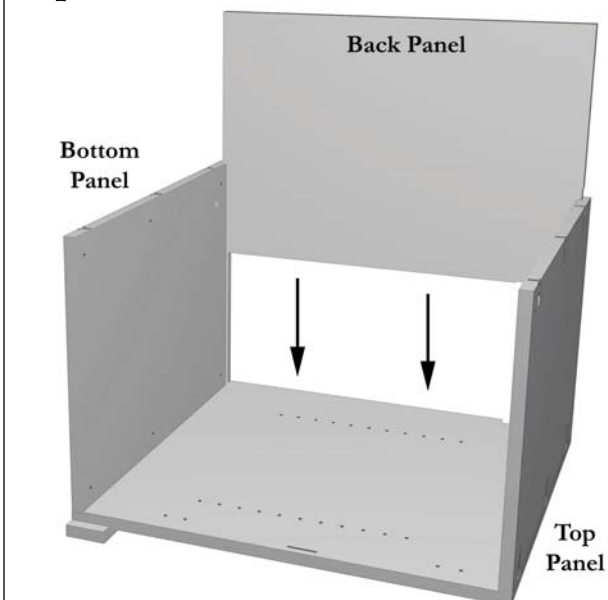
### Step 2



Locate the top and bottom panels. **Note that the bottom panel will have a hole for the system cord towards the back of the panel.** Place each CAM fitting over each connector stud on the right side panel. Make sure that the CAM fittings are facing outside of the humidor. Tighten the CAM fitting around the connector studs by turning clockwise 90 degrees.



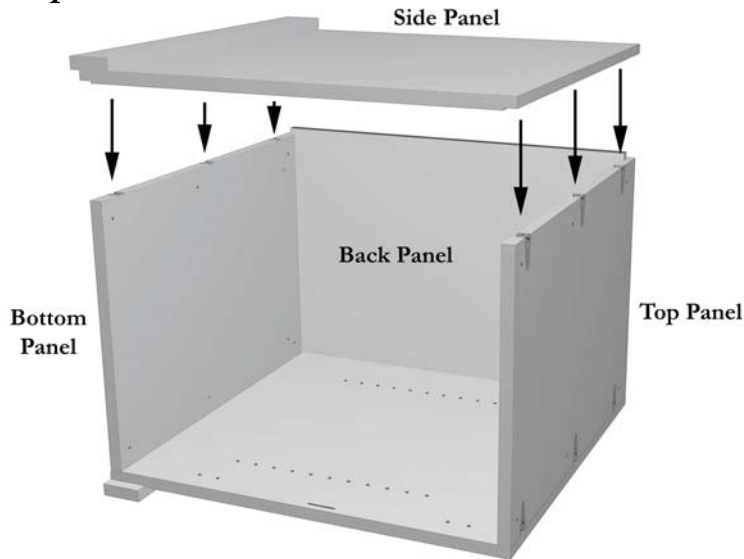
### Step 3



Locate the back panel and slide into the dados (or grooves) on the top, bottom and right side panels.



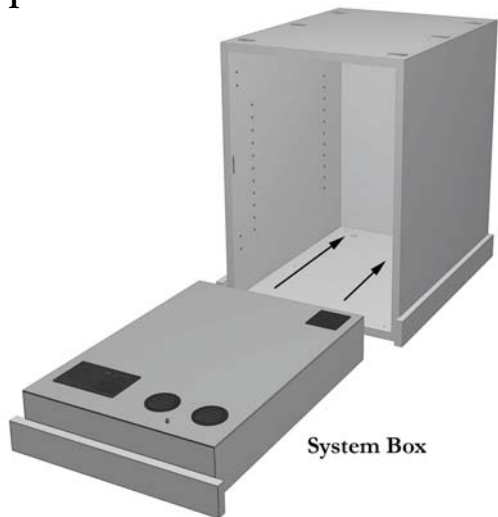
## Step 4



Locate the left side panel and insert connector studs into each connector stud hole. Slide the left side panel into the top, bottom and back panel by fitting the connector studs into each CAM fitting. Tighten the CAM fittings around the connector studs by turning clockwise 90 degrees.



## Step 5



**Note: If you purchased a System upgrade, you will need to place the lower hinge in place before sliding your system box into the cabinet. Please view steps 1-2 under the door installation steps on page 5.**

Stand the humidor upright and slide the already assembled system box into the bottom of the humidor. Secure the system box using the pre-drilled holes and 1" screws provided. **Note: two holes are located on the right side of the system box; one towards the front and the other towards the back. Before securing the system box with screws, make sure the front trim is aligned with side trim.**



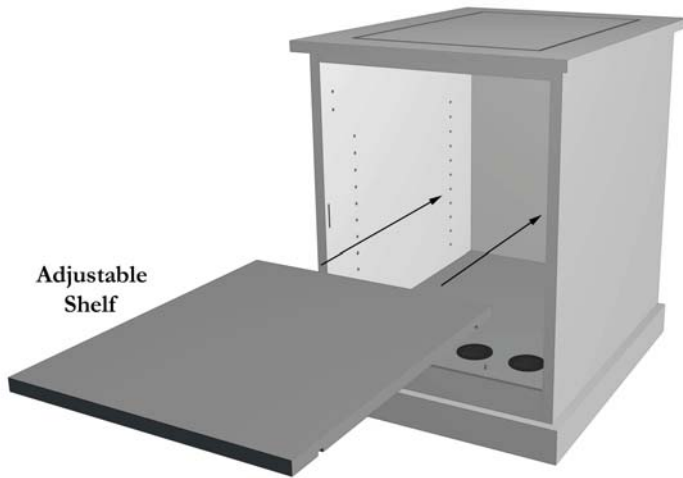
## Step 6



Locate the tabletop and place over the top of the humidor. The groove on the bottom side of the tabletop fits right over the top of the humidor. Secure in place with the six round head washer screws provided.



## Step 7



Locate the adjustable shelf and four shelf pins. Insert the shelf pins in the chosen location. Set the shelf on top of the shelf pins so that it rests in the groove on the bottom of the shelf.



## Steps to Door Installation

1. The versatility of the Vigilant hardware allows you to mount your door to the cabinet, hinged left or right. Therefore, you must first determine which side of the cabinet the hinges will be fastened to.
2. Take the first hinge plate with the arrows pointing toward the front of the cabinet and insert the two black pins in the plate into the pre-drilled holes on the side of the cabinet. **Note: the hinge holes do not line up with the shelf pin holes. There is a set at the top and bottom of the cabinet.**
3. Take the second hinge plate and repeat step 2 by inserting the black hinge plate pins into the holes on the bottom of the cabinet, making sure to press the plate firmly against the cabinet side and snap the levers closed.
4. Lay the door on a flat, scratch-free surface with the hinge holes facing up. Take the first hinge, and with rectangular cover plate open, press the round part of the hinge firmly into the holes in the door and snap the rectangular plate closed.
5. Repeat step 4 for the second hinge.
6. Standing the door upright, open the hinges and line them up with the hinge plates on the cabinet.
7. Align the barrel on the inside of the hinge arm with the two teeth on the front of the hinge plate and press the hinge onto the plate by first pushing back then down onto the plate until it snaps into place (see image 1).



Image 1

8. Repeat for the second hinge. You may need to rotate the adjustment screws on the hinge plates in order to get proper vertical alignment between the two hinges.

9. Close the door and check it for proper alignment. If the door is not closing properly or does not align exactly with the cabinet front then some simple adjustments will be required.

### Adjusting the door up and down (See Image 2)

#### **Moving the door up or down:**

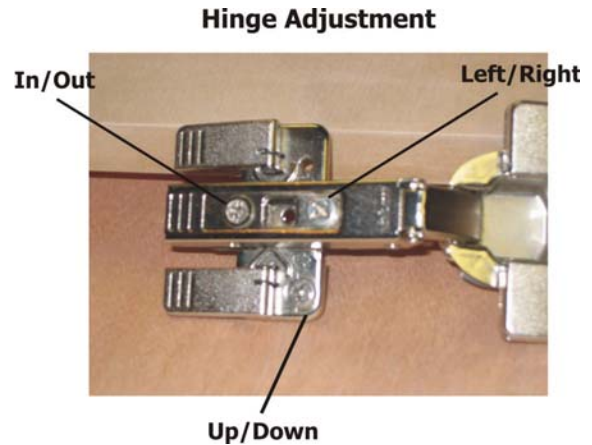
Turn the adjustment screws on the hinge plate to bring the door up or down. Both screws must be adjusted.

#### **Moving the door left or right:**

Turn the adjustment screw on the front of the hinge arm to move the door left or right. Both hinges may require this adjustment in order to get the door square to the cabinet.

#### **Moving the door in or out:**

Turn the adjustment screw on the back of the hinge arm to move the door closer to the cabinet or further away. This may be required in order to get the door to land properly on the cabinet front.



**Image 3**

### **Door Pull**

Once your door is installed onto the cabinet, decide where to place the door pull (top, middle, or bottom). Pre-drill a screw hole with a 3/16" drill bit. Be sure to place a scrap of wood on the back side of the door while pre-drilling to prevent the wood from chipping on the opposite side. Attach the door pull with the screw provided.

### **General Maintenance Note**

Please note that the water tray has a sliding panel for access. This allows easy access to the water tray no matter which side the cabinet door is hinged. The sliding panel will slide out underneath the bottom hinge plate.

*Additional installation questions?*

*Contact us:*

VIGILANT, INC.  
85 Industrial Park Drive  
Dover, NH 03820  
Toll Free 1-888-812-4427  
Outside US 1-603-285-0400  
Fax 1-603-285-0420  
email: [info@vigilantinc.com](mailto:info@vigilantinc.com)  
On the web [www.vigilantinc.com](http://www.vigilantinc.com)